



**CLINTON
SCHOOL DISTRICT**

RETURN TO **LEARN**

A Responsible and Responsive Return to School Plan

PLAN OVERVIEW



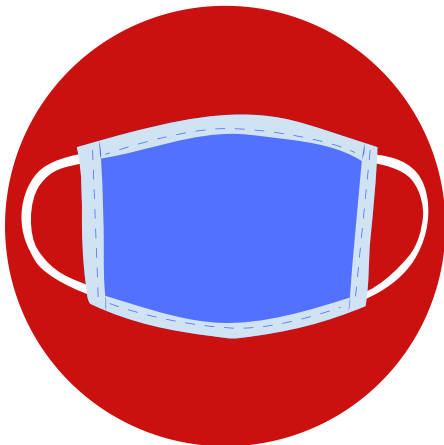
**Increased
disinfecting and
hygiene protocols**



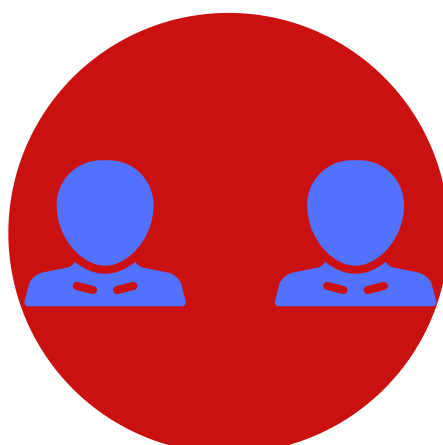
**Virtual Learning
option available
for students**



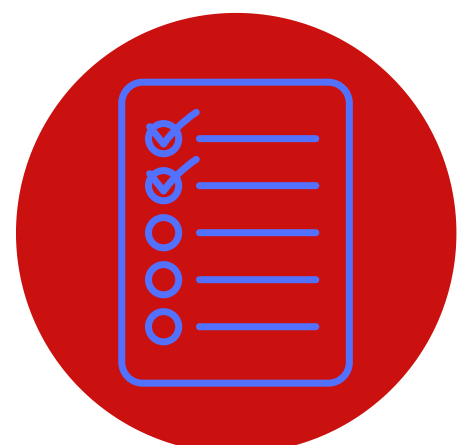
**Daily student and
staff symptom
checks**



**Face covering
requirements when
social distancing
isn't possible**



**Social distancing
implemented
when possible**



**Procedures and
plans for COVID-19
infections**

Full re-entry plan found at www.clintoncardinals.org